

Extrusion machining information

Application

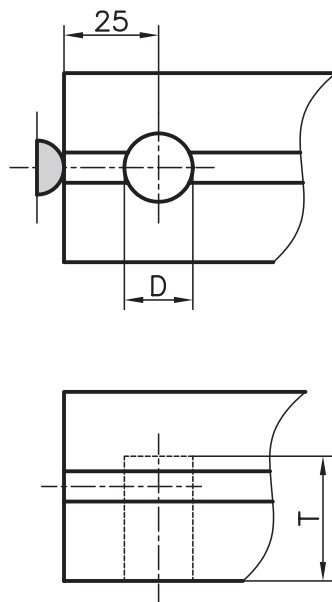
The drill jig and special drill bits make it easy to drill the holes for KANYA's patented PVS® connector. The main advantage of the drill jig is that it clamps directly onto the extrusion. The rotating stop, for square or mitred cuts, guarantees the precise drilling distance.

The HSS special drill bit, with the MT2 Morse taper shank, is ground flat to cut the extrusion surface. It can be re-sharpened as often as necessary.

A special drill bit with a 90° point is used to drill the C03-8, B01-8 softline extrusion and the A02-8 and C02-8 angle extrusions.

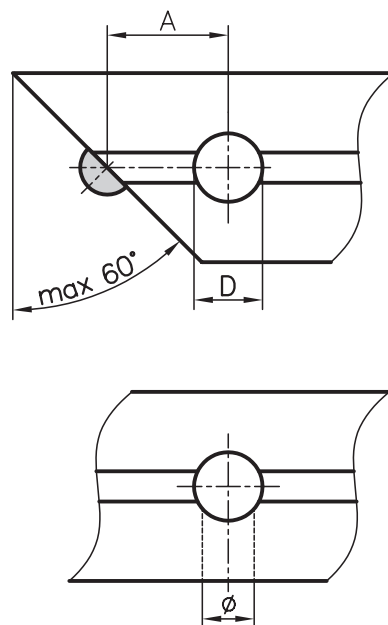
Standard 90° joint

"25" stop 

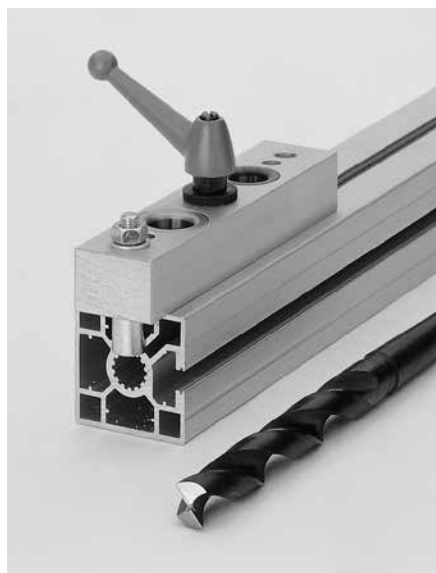


Mitre joint

"32" stop 



That drill, allows a connection for a parallel connector at any position at the extrusion.



Machining data

Extrusion type	D	Ø	A	T
50 base	18.1	13.7	32	33
45 base	18.1	13.7	32	30.5
40 base	18.1	13.7	32	28
30 base	15.1	12.1	32	21.5
20x47/95/150 base	15.1		32	18
20 base*	7.3		25	

* with a centre hole ø 6mm

Note

The 7.3 mm Ø holes for 20x20/40 extrusions are drilled using a normal twist drill bit without a drill jig.

Order data

Order number

Drill jig

50/45/40/30 base

AB95-0

Special drill bits

to fit the drill jig

50/45/40 base

A96-1

30 base

B96-2

A02-8, C02-8, C03-8 extrusions

A96-3

B01-8 extrusions

B96-3